

Mother in Sign Language



1 General Sign

Extend and spread apart fingers of dominant hand, then touch chin with thumb once or twice.

2 Variations

Finger wiggling or double tap on chin for added personal touch.



3 Importance

Sign language bridges communication gap for deaf/hard-of-hearing individuals, conveying love and connection through gestures.



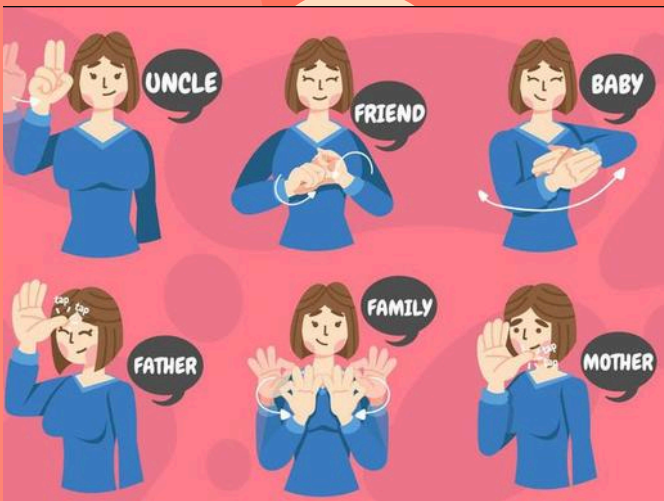
4 Sign Language

Complete and natural language using hand gestures, facial expressions, and body movements.



5 Family Signs

Includes signs for "father," "daughter," "son," "grandfather," "grandmother," "baby," "brother," "sister," "aunt," and "cousin."



6 Connection

Learning basic signs enhances connection with Deaf and Hard of Hearing community.

